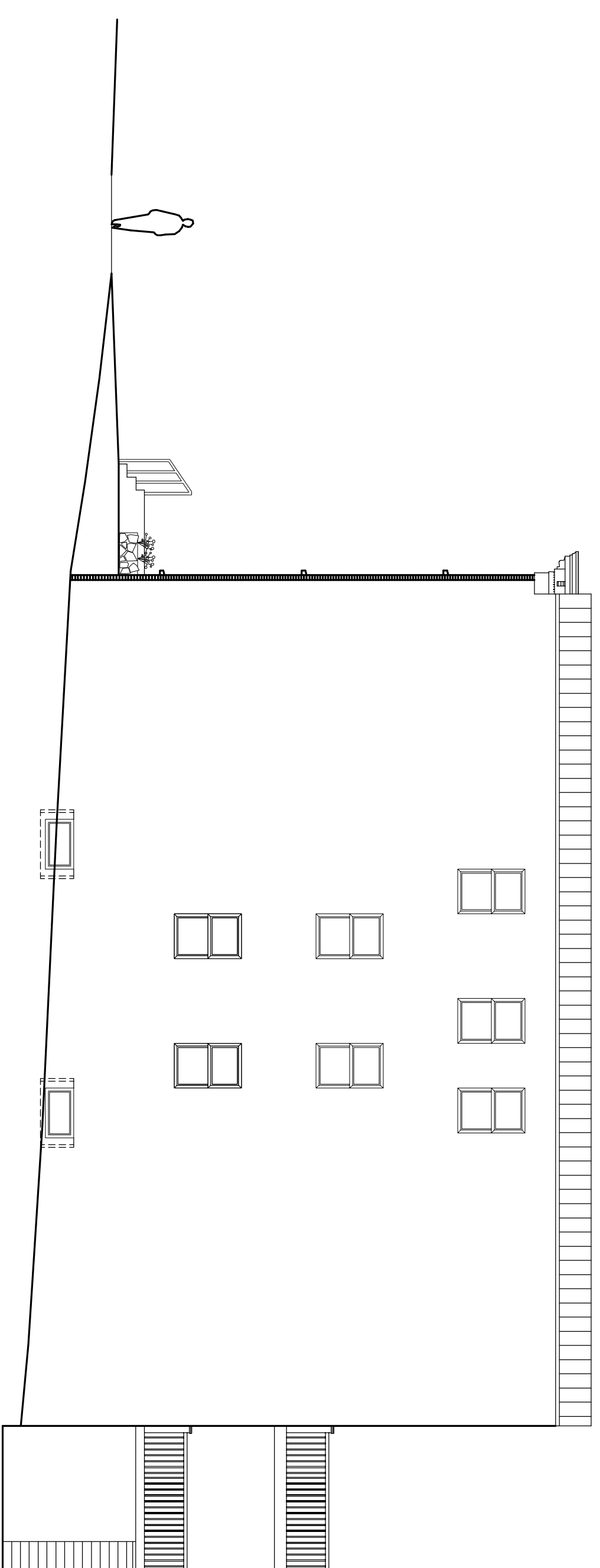
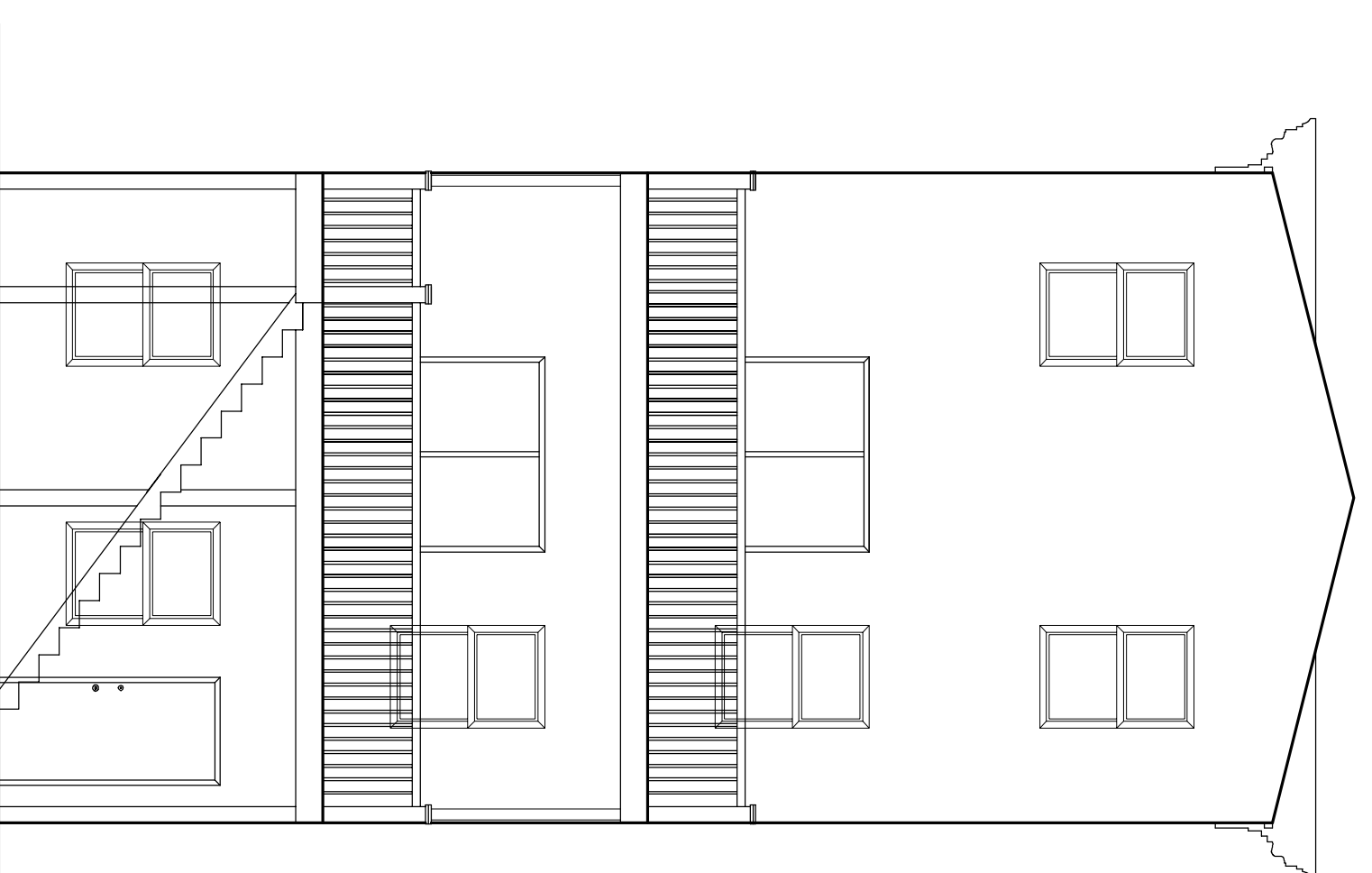


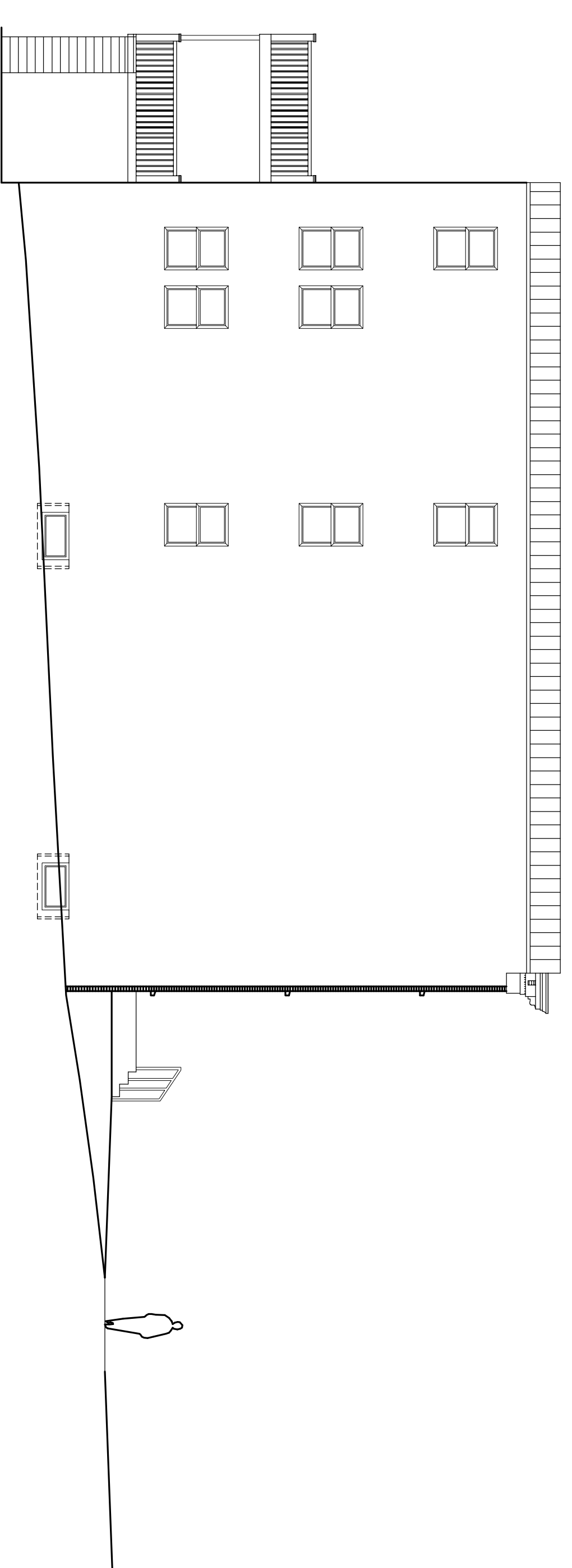
1  
NORTH ELEVATION  
3/16" = 1'-0"



2  
EAST ELEVATION  
1/8" = 1'-0"

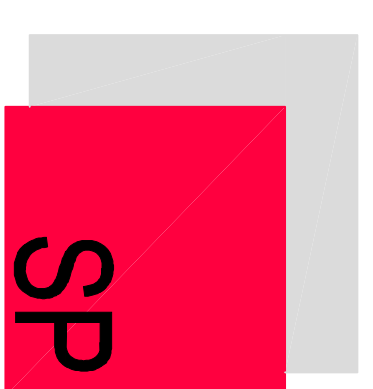


3  
SOUTH ELEVATION  
3/16" = 1'-0"



4  
WEST ELEVATION  
1/8" = 1'-0"

PROPOSED 2 UNIT RESIDENTIAL BUILDING  
@ 2011 GIRARD AVENUE



SPArch, Inc.  
Architecture, Planning,